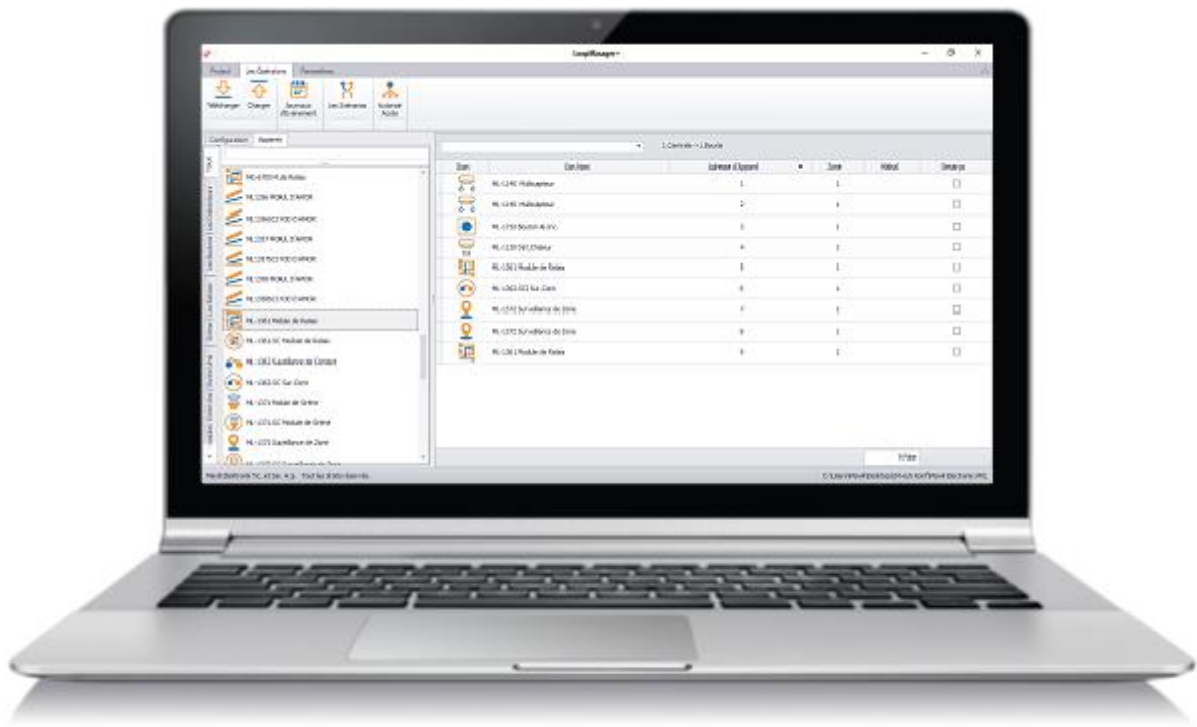


ML-1612 LOOP MANAGER PLUS SOFTWARE



ML-1612 LoopManager+ is a computer program for programming ML-12XX series fire alarm control panels. With the LoopManager+ program, devices settings (**location name, zone, delay, etc.**) and panel settings (**panel name, operating mode, etc.**) in the fire alarm system can be made. Panels can be programmed as one by one or all panels in network structure can be programmed via any panel.

PRODUCT FEATURES

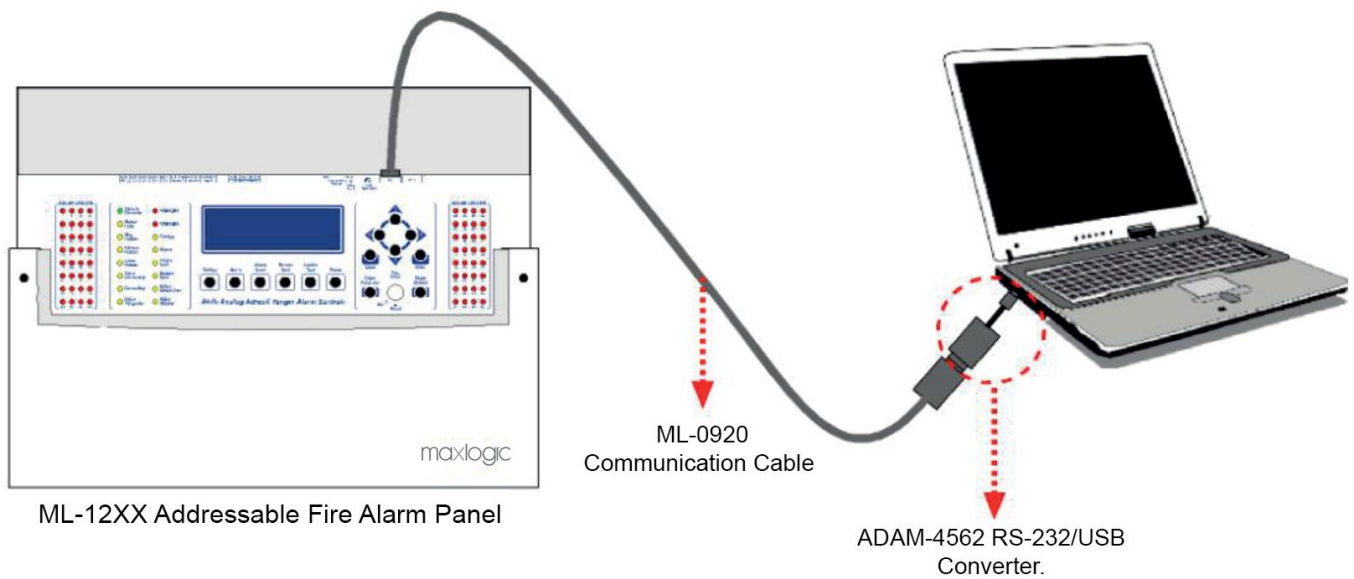
- Max. 1000 automation cause effect scenarios for each panel can be created with using AND, OR, COINCIDENCE relationships
- Creating the location text
- Up to 1000 zone can be created as software
- 2. Level delay time can be assigned as 250 sec.
- Delay by-pass setting
- 13 different event type can be assigned, 8 of them can be user-defined
- Silenceable/non-silenceable output setting
- Latching/non-latching condition setting
- Supplier and panel name can be changed.

- System operation mode can be arranged as General / Zonal
- Panel level 3 password can be changed.
- TYPE A / TYPE B pre alarm operation mode settings
- Delay cancel condition setting
- Day-night operation mode setting
- Network interface setting

MODELS

Product Model	Description
ML-1612	Maxlogic Intelligent Addressable System Loop Manager+ Software (Communication Cable and Converter included)

CONNECTION DIAGRAM PROGRAMMING THE SINGLE PANEL



PROGRAMMING THE NETWORK SYSTEM

